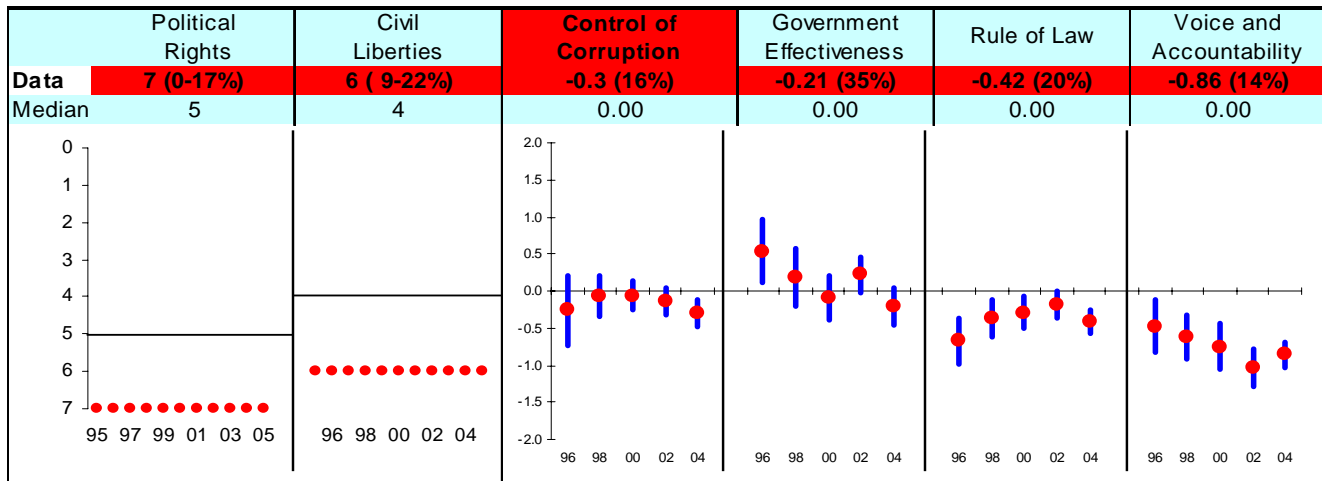
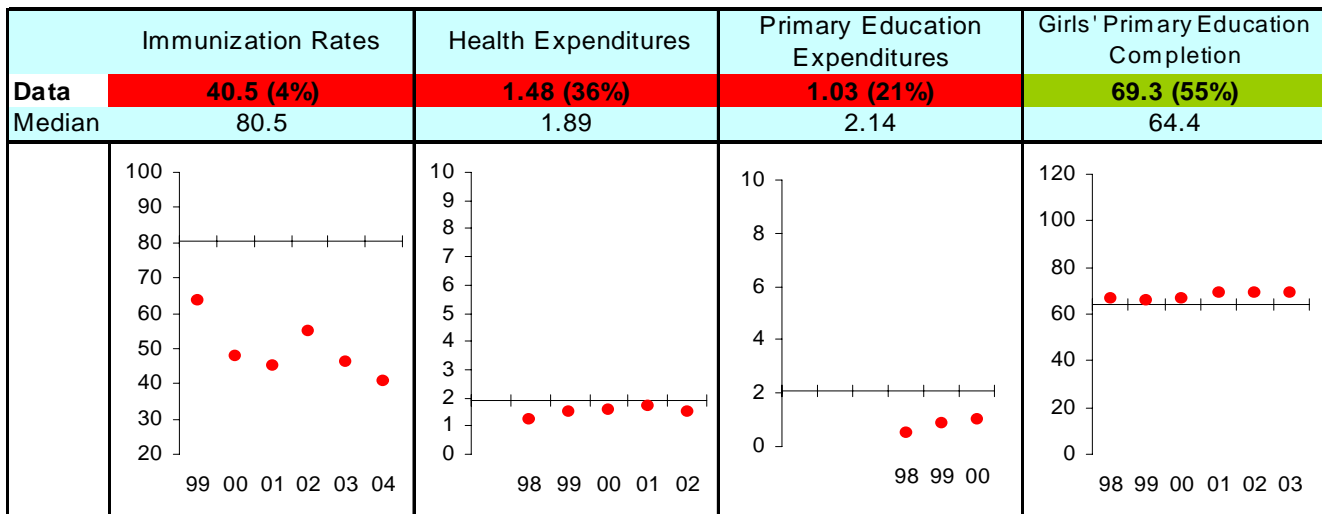


# Lao PDR FY06

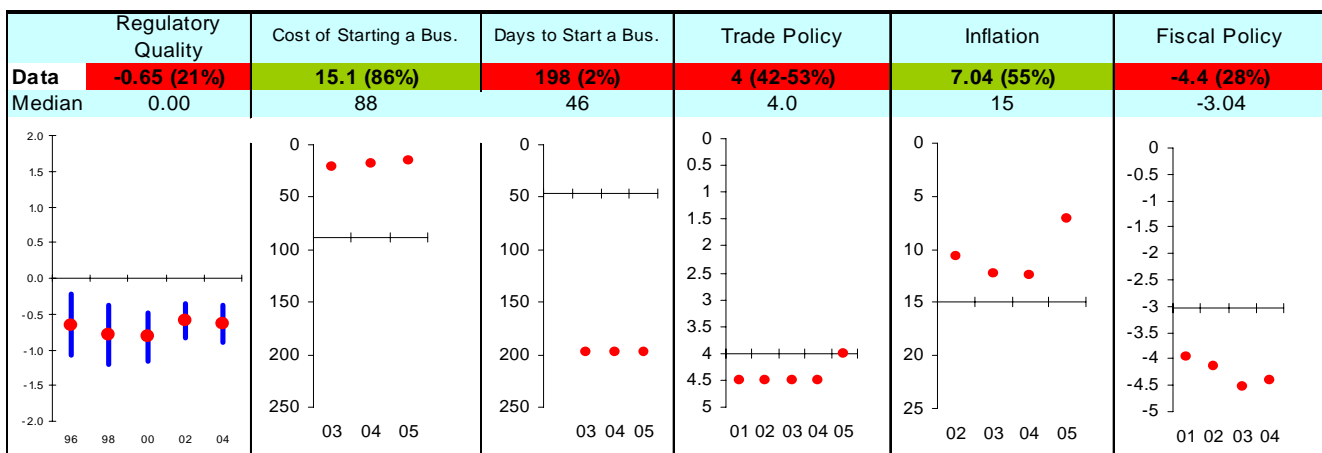
## Ruling Justly



## Investing in People



## Economic Freedom



Note: The Board of the MCC will consider performance under these indicators plus qualitative and other materials in choosing countries eligible to submit compact proposals to MCC. The first number is the country's score and percentage in () is their ranking relative to other candidate countries (0% the worst, 50% the median, and 100% the best.) Graphs: higher is better, the horizontal-axis has been drawn through the median, the red dot is the data point, and the blue vertical bar is the standard error. Indicators highlighted in green are above the median as currently calculated and those in red are below. Medians may change as new data becomes available.